



DONOR NAME UPPER CAPE YMCA



# UPPER CAPE Y DESIGN

A campaign to build  
A NEW YMCA FOR THE UPPER CAPE

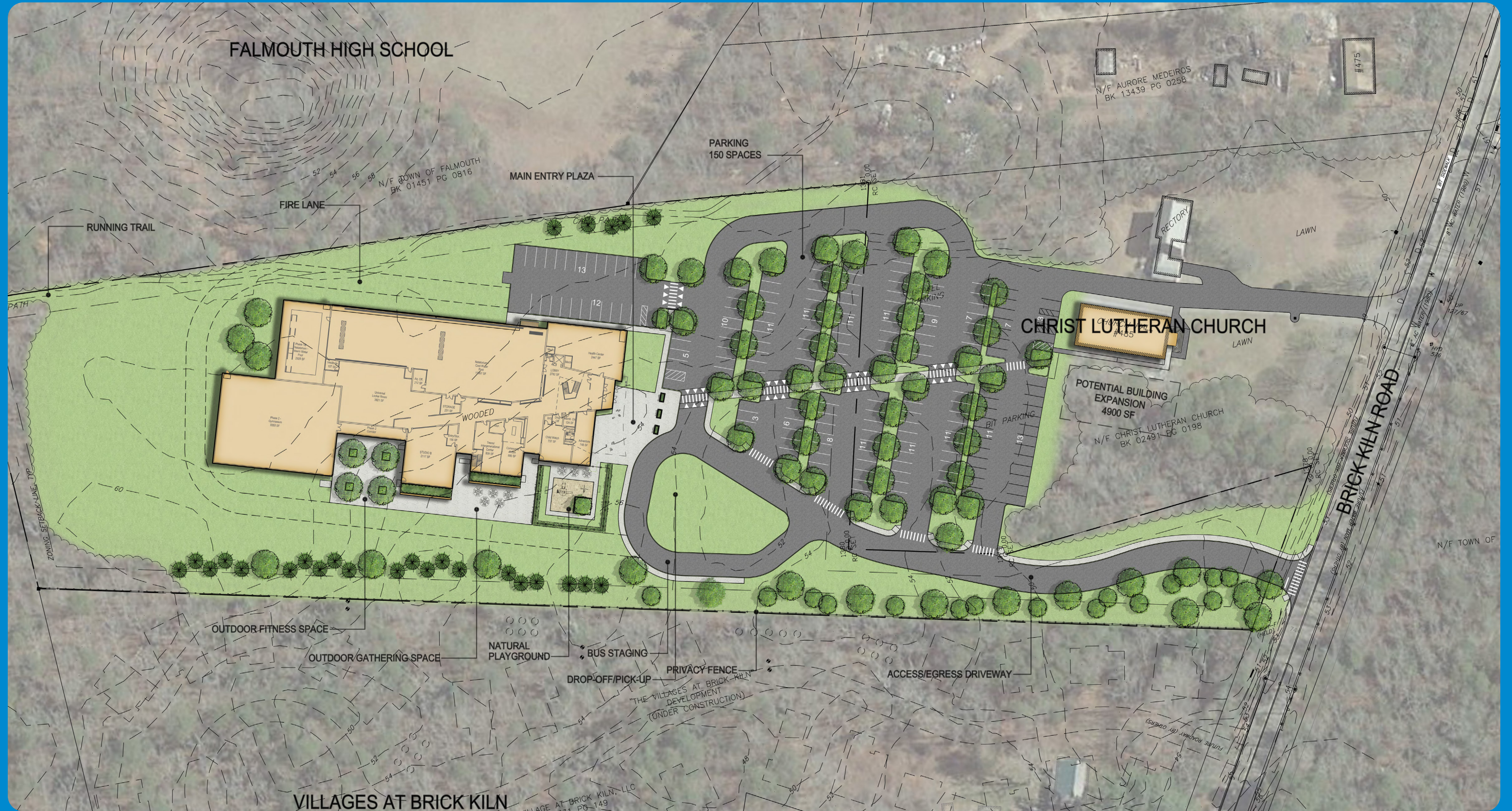


# ARTIST EXTERIOR RENDERING



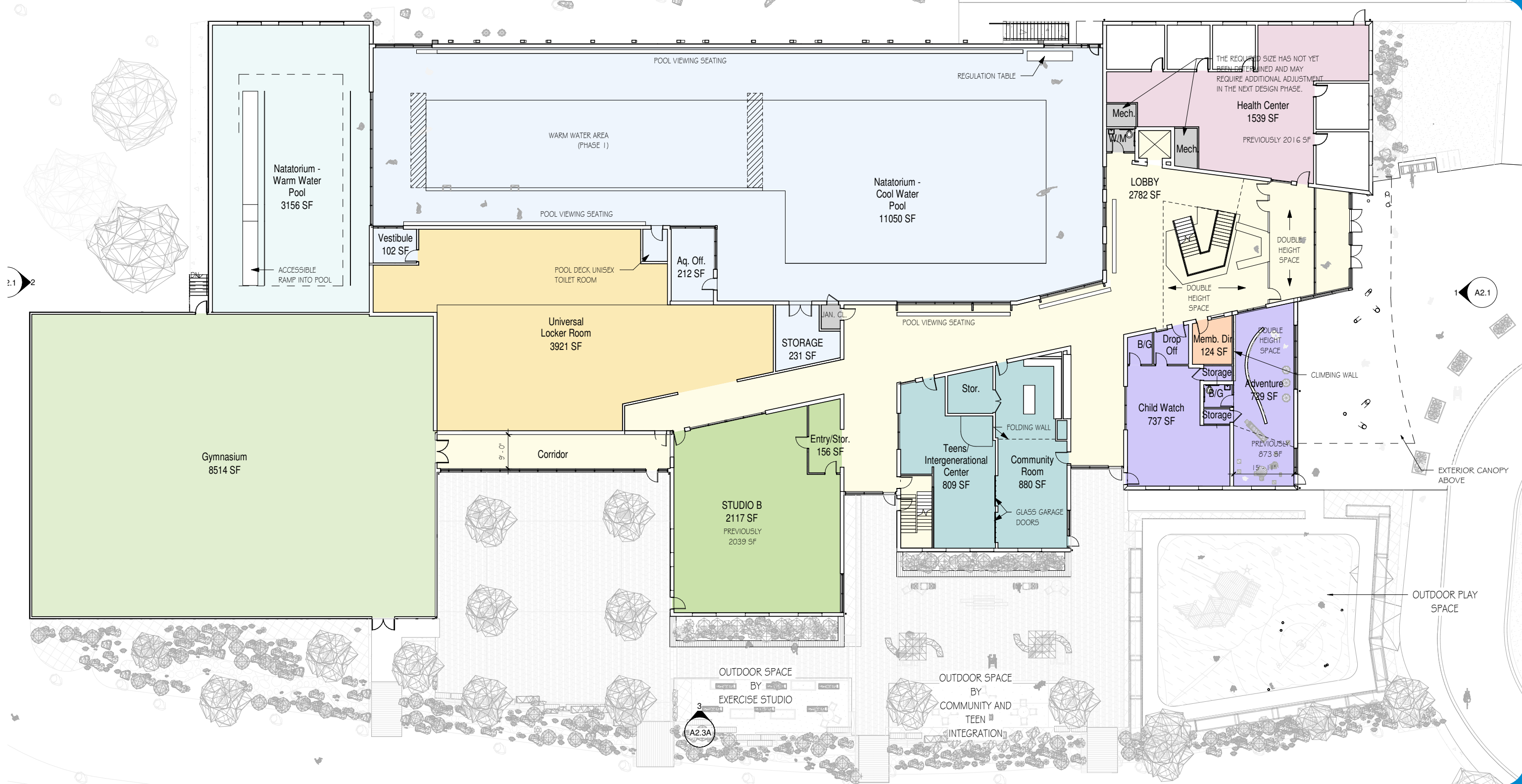


# SITE PLAN



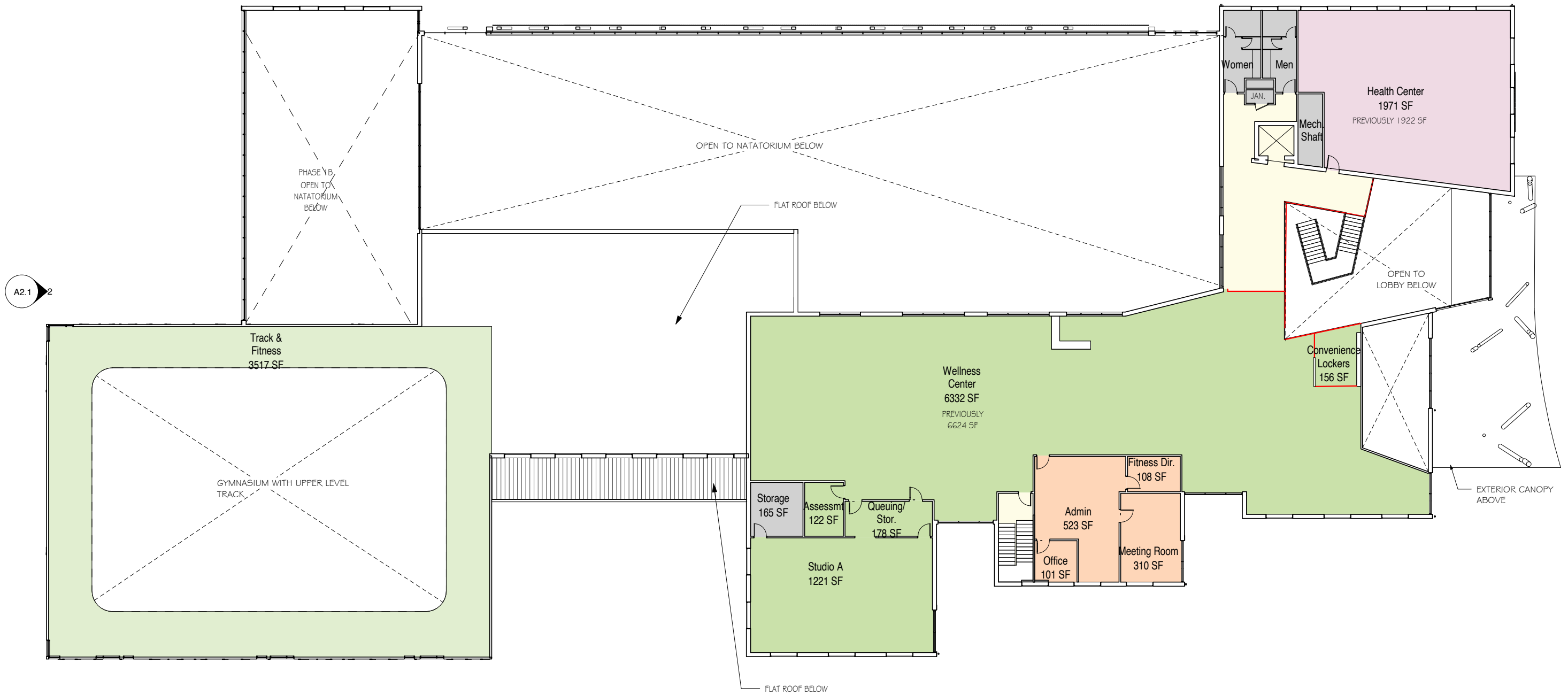


# FIRST FLOOR





# SECOND FLOOR

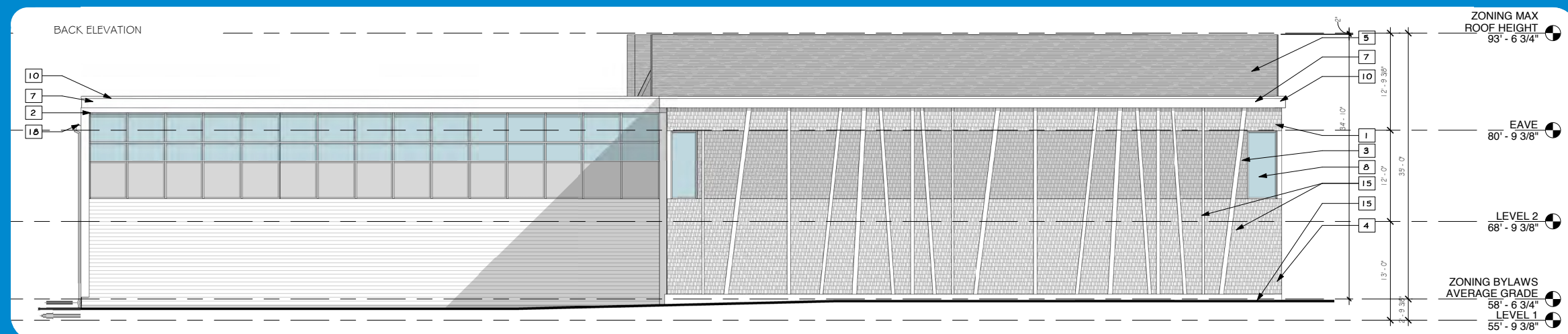
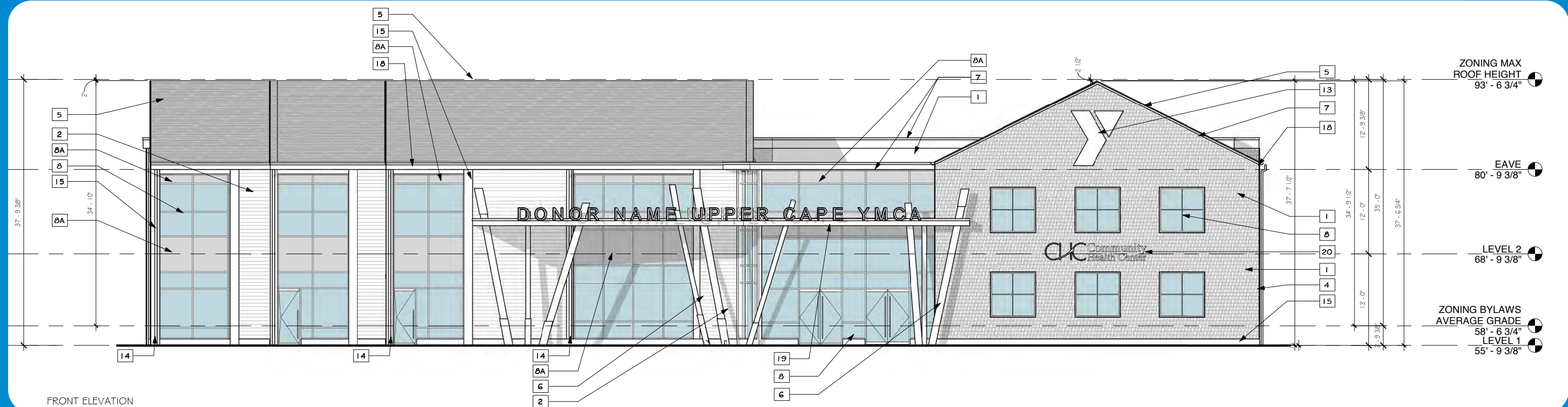


FLOOR 2 PROPOSED PLAN WITH PHASES





# FRONT & REAR ELEVATIONS

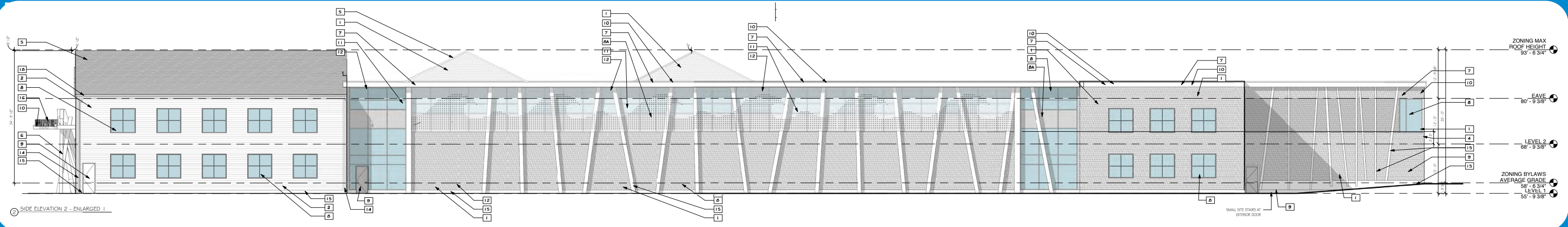


EXTERIOR FINISHES		
TYPE	MANUFACTURER	STYLE / COLOR
1 CEMENTITIOUS SHINGLE SIDING	JAMES HARDIE	ANONITED GRAY OGO3
2 CEMENTITIOUS LAP SIDING	JAMES HARDIE	ARCTIC WHITE
3 CEMENTITIOUS SHINGLE SIDING	JAMES HARDIE	MONTEREY TAUPE
4 XTREME TRIM CORNER REVEAL	XTREME TRIM	ANODIZED ALUMINUM
5 ASPHALT SHINGLE ROOF	GAF ARCHITECTURAL SERIES	FOX HOLLOW GRAY
6 ROUND WOOD SLANTED COLUMNS WITH METAL BASE		WOOD FINISH WITH COLORED METAL BASE
7 1X PVC FASCIA BOARD WITH DRIP EDGE		TO MATCH SHINGLE SIDING COLOR
8 ALUMINUM STOREFRONT SYSTEM	KAWNEER	ANODIZED ALUMINUM. GLASS BY OLD CASTLE GLASS - SOLARBAN 70 CLEAR
8A SPANDREL GLASS PANEL	OLD CASTLE GLASS	WARM GRAY
9 EXTERIOR PAINTED METAL DOOR		TO MATCH SIDING COLOR
10 TPO FLAT ROOF	FIRESTONE OR EQUAL	WHITE
11 SCREENING SYSTEM, METAL (PERFORATED)	TERREAL NORTH AMERICA	WHITE
12 1 1/2\" X 1 1/8\" ANGLED COLUMNS		WHITE
13 EDGELIT STAINLESS STEEL YMCA LOGO	TBD	STAINLESS STEEL BY OWNER.
14 DOWNSPOUT		GRAY
15 5/4\" X PVC TRIM	AZEK	WHITE
16 EXTERIOR SIGNAGE - PREFINISHED METAL		DARK BLUE
17 STANDING SEAM METAL ROOF	FIRESTONE UNA-CLAD	SLATE GRAY
18 HALF ROUND 7\" GUTTER	LEAD COATED COPPER GUTTER	GRAY
19 FLAT ROOF WITH WOOD UNDERSIDE		TBD
20 CAPE COD HEALTH CENTER SIGN	TBD	STAINLESS STEEL BY OWNER.

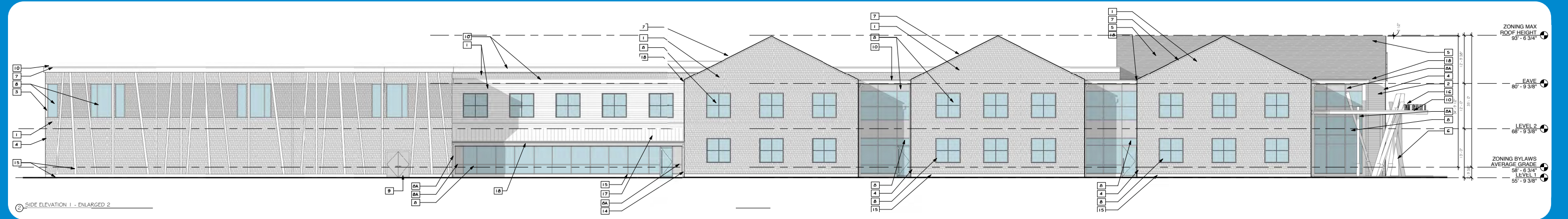




# SIDE ELEVATIONS



2 SIDE ELEVATION 2 - ENLARGED 1



3 SIDE ELEVATION 1 - ENLARGED 2

## EXTERIOR FINISHES

	TYPE	MANUFACTURER	STYLE / COLOR
1	CEMENTITIOUS SHINGLE SIDING	JAMES HARDIE	ANOIDIZED GRAY 0603
2	CEMENTITIOUS LAP SIDING	JAMES HARDIE	ARCTIC WHITE
3	CEMENTITIOUS SHINGLE SIDING	JAMES HARDIE	MONTEREY TAUPE
4	XTREME TRIM CORNER REVEAL	XTREME TRIM	ANODIZED ALUMINUM
5	ASPHALT SHINGLE ROOF	GAF ARCHITECTURAL SERIES	FOX HOLLOW GRAY
6	ROUND WOOD SLANTED COLUMNS WITH METAL BASE		WOOD FINISH WITH COLORED METAL BASE

## EXTERIOR FINISHES

7	1X PVC FASCIA BOARD WITH DRIP EDGE		TO MATCH SHINGLE SIDING COLOR
8	ALUMINUM STOREFRONT SYSTEM	KAWNEER	ANODIZED ALUMINUM. GLASS BY OLD CASTLE GLASS - SOLARBAN 70 CLEAR
8A	SPANDREL GLASS PANEL	OLD CASTLE GLASS	WARM GRAY
9	EXTERIOR PAINTED METAL DOOR		TO MATCH SIDING COLOR

## EXTERIOR FINISHES

10	TPO FLAT ROOF	FIRESTONE OR EQUAL	WHITE
11	SCREENING SYSTEM, METAL (PERFORATED)	TERREAL NORTH AMERICA	WHITE
12	12" X 18" ANGLED COLUMNS		WHITE
13	EDGEJIT STAINLESS STEEL YMCA LOGO	TBD	STAINLESS STEEL. BY OWNER.
14	DOWNSPOUT		GRAY
15	5/4 X PVC TRIM	AZEK	WHITE

## EXTERIOR FINISHES

16	EXTERIOR SIGNAGE - PREFINISHED METAL		DARK BLUE
17	STANDING SEAM METAL ROOF	FIRESTONE UNA-CLAD	SLATE GRAY
18	HALF ROUND 7" GUTTER	LEAD COATED COPPER GUTTER	GRAY
19	FLAT ROOF WITH WOOD UNDERSIDE		TBD
20	CAPE COD HEALTH CENTER SIGN	TBD	STAINLESS STEEL. BY OWNER.

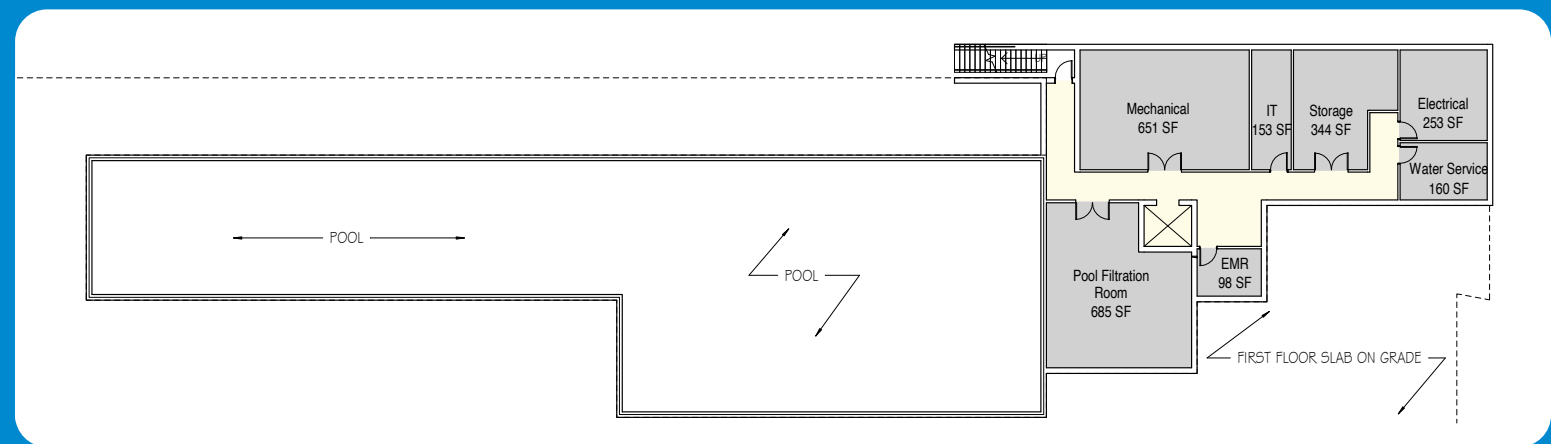
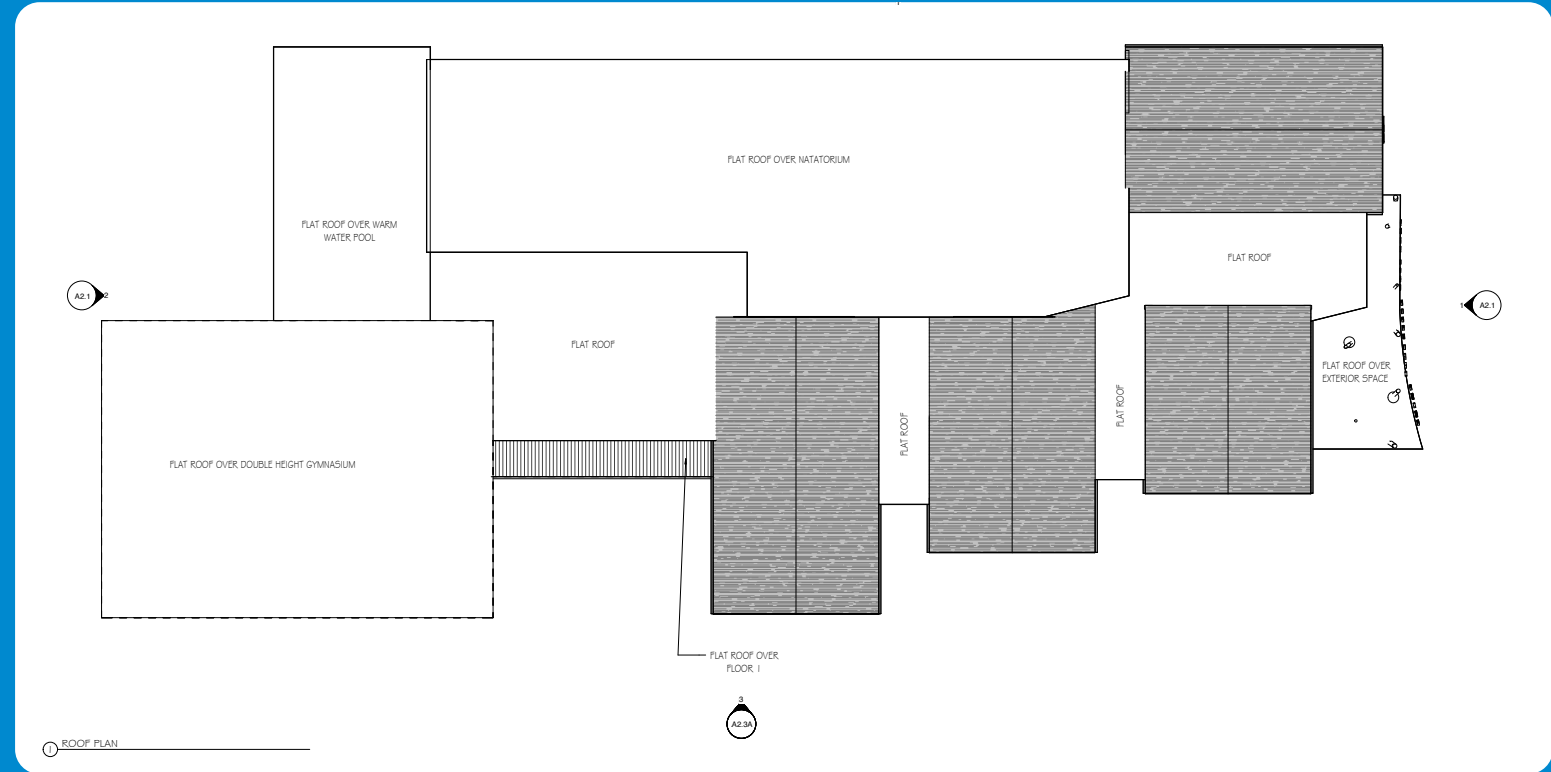


DRAFT - JULY 2023



# 485 BRICK KILN ROAD, FALMOUTH

# BASEMENT & ROOF PLAN



DRAFT - JULY 2023





**YMCA CAPE COD**

100 INDEPENDENCE DRIVE SUITE #2

HYANNIS, MA 02601